

### **Standard features**

- ⚠ L.E.D. status indicators with viewing window
- ⚠ Increased battery capacity
- ⚠ Attractive redesigned housing
- ⚠ Hinged, removable cabinet door
- ⚠ Battery-saver hardware
- ⚠ Active voltage monitoring
- ⚠ Upgraded power supply
- ⚠ Increased event log memory
- ⚠ Expanded alert code library - nearing 50
- ⚠ Additional individual fused circuits
- ⚠ Cabling is entirely plug and play
- ⚠ Car-top box consolidates all parts into one box
- ⚠ Available Diagnostic Display event reader
- ⚠ 6-stop controller

⚠ **Multiple health status indicators**

⚠ **Remote Monitoring Capable**

⚠ **Modern attractive enclosure**

⚠ **Ethernet cabling to locks & calls**

The latest release of our residential elevator controller is packed with new features and benefits that bring incredible added value to your elevator system.

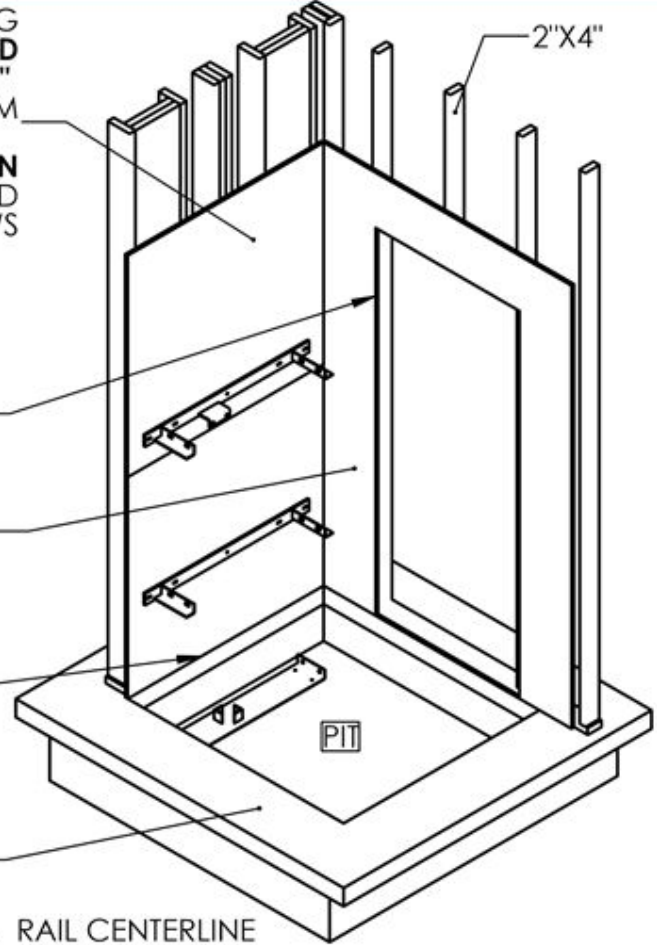
RAIL WALL SHEATHING  
**3/4" PLYWOOD**  
 SCREWED TO STUDS **EVERY 12"**  
**WITH #10-2-1/2" SCREWS MINIMUM**  
 FOR BEST RESULTS **USE A CONSTRUCTION**  
**ADHESIVE** IN ADDITION TO REQUIRED  
 WOOD SCREWS

WALLS WITH **DOOR**  
**OPENINGS MUST HAVE**  
**2"X4" CONSTRUCTION**

ALL OTHER WALLS  
 AS PER LOCAL  
 BUILDING CODE

SURFACE OF PLYWOOD  
**FLUSH WITH WALL OF PIT**

BOTTOM FLOOR  
 SLAB



RAIL CENTERLINE  
 AS PER PROJECT  
 SHOP DRAWINGS

MIDDLE STUDS  
 THREE 2" x 6"

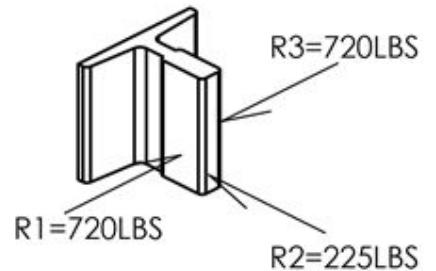
16 1/4" 16 1/4"

- CHANNEL CONSTRUCTION TYPICAL **TWO PLACES**
- TWO 2" x 12" INSIDE TWO 2" x 6"
- 2x6s **SCREWED TO 2x12s EVERY 6"**  
**WITH #10x3-1/2" WOOD SCREWS**
- CHANNELS AND MIDDLE STUDS  
 BETWEEN FLOORS **FULL HEIGHT OF**  
**HOISTWAY**

RAIL WALL CHANNEL  
 ASSEMBLY

TOP VIEW

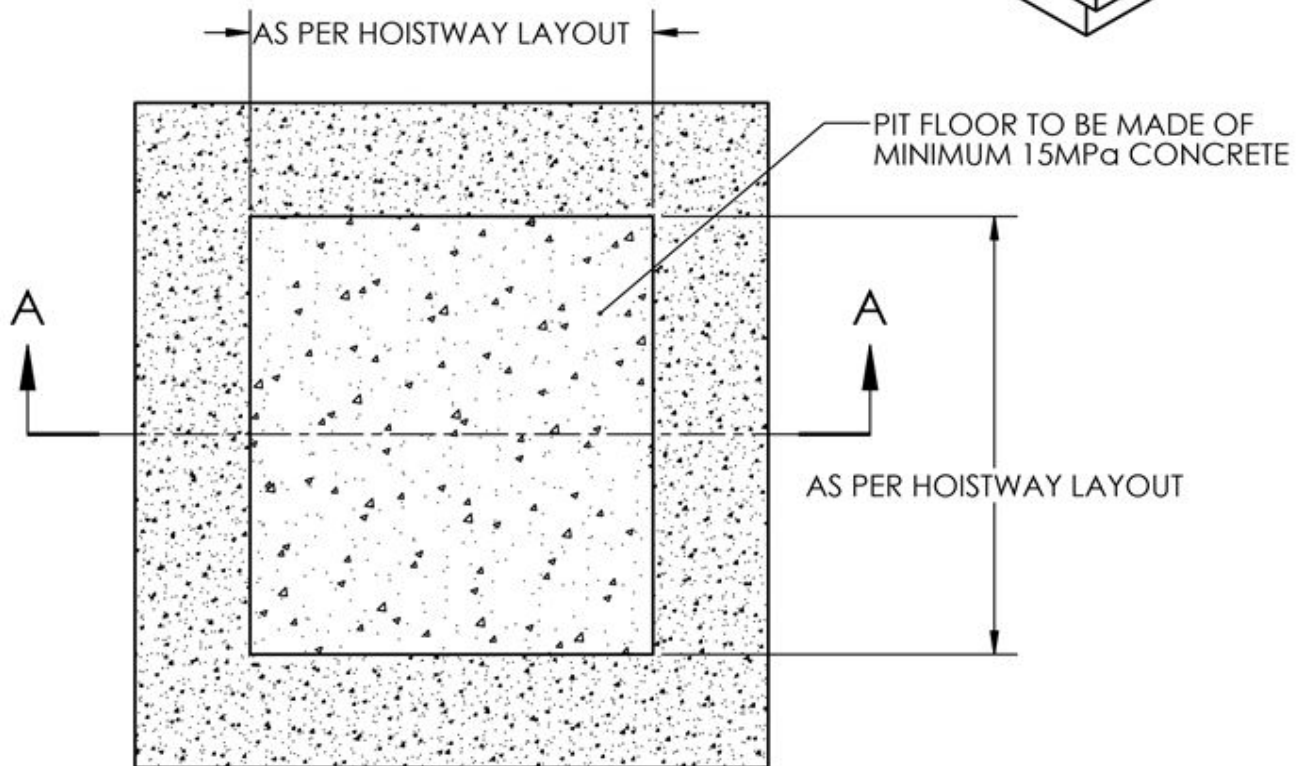
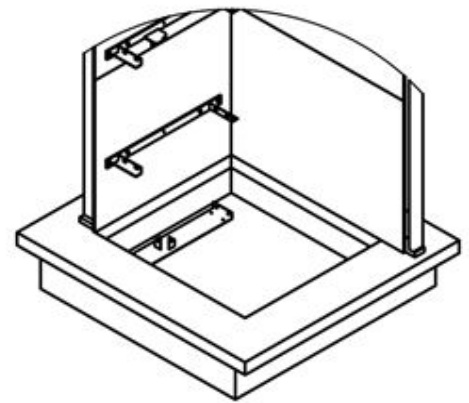
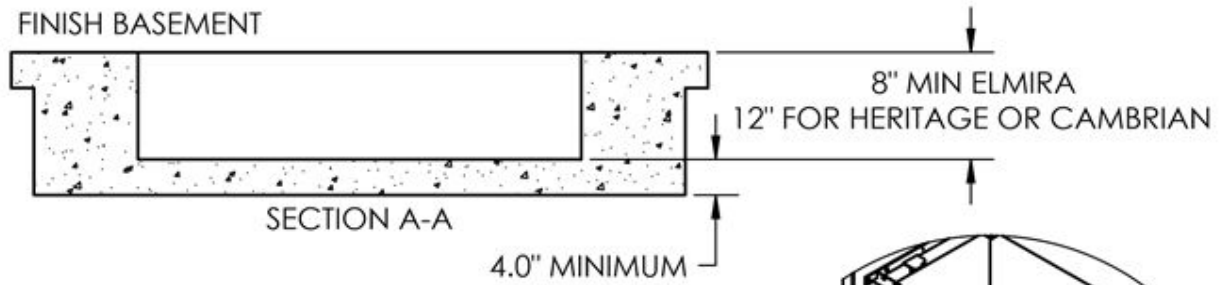
DOOR  
 WALL



PLYWOOD

CAMBRIDGE ELEVATING IS NOT  
 RESPONSIBLE FOR THE STRUCTURAL  
 DESIGN OF THE BUILDING AND ITS  
 ABILITY TO SUPPORT THE ELEVATOR  
 LOADS AND/OR REACTIONS

**CAMBRIDGE**  
 ELEVATING INC.

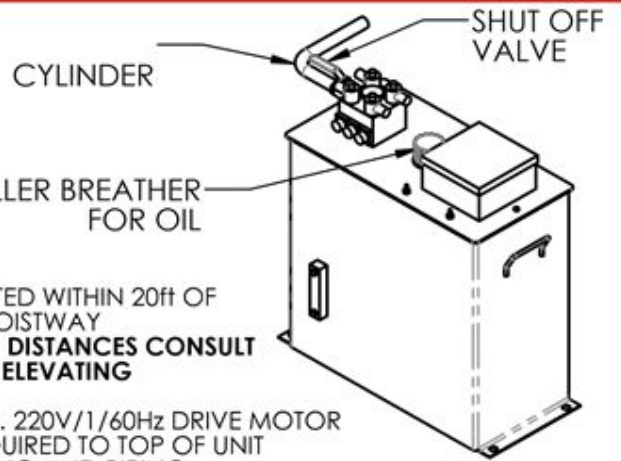
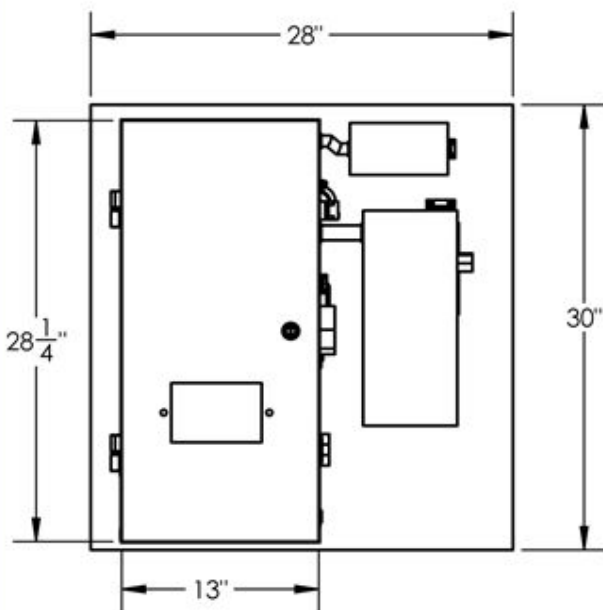
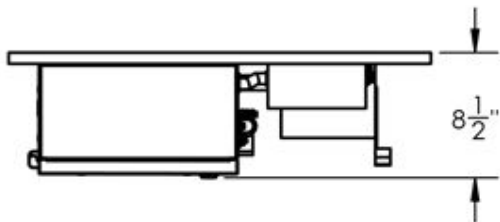
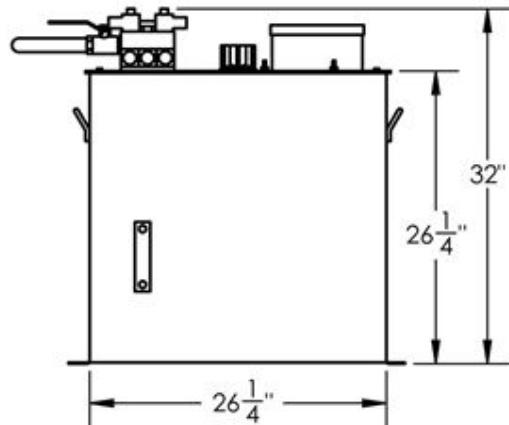
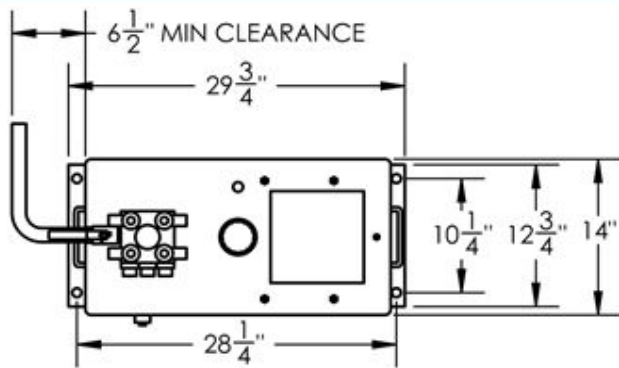


PIT FLOOR TO BE DESIGNED FOR AN IMPACT LOAD OF 9600LBS  
AND A STATIC LOAD OF 5500LBS UNDER CYLINDER

REINFORCING AND STRENGTH AS PER LOCAL  
STANDARDS AND CODES

**RESIDENTIAL PIT DETAILS**

**CAMBRIDGE**  
ELEVATING INC.

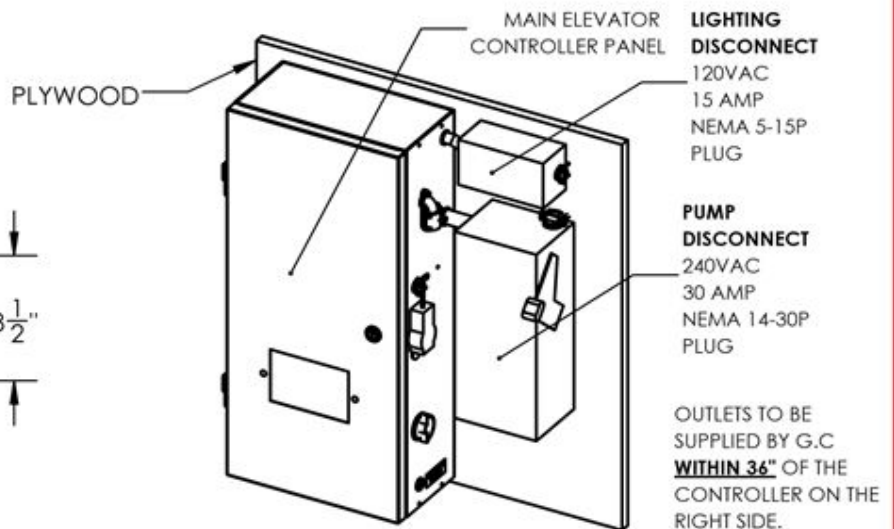


TO BE LOCATED WITHIN 20ft OF ELEVATOR HOISTWAY  
**FOR LONGER DISTANCES CONSULT CAMBRIDGE ELEVATING**

3.0 or 5.0 H.P. 220V/1/60Hz DRIVE MOTOR  
 ACCESS REQUIRED TO TOP OF UNIT FOR OIL FILLING AND PIPING

DISCONNECTS SUPPLIED BY C.E.I. ON MAIN ELEVATOR CONTROL PANEL

**HYDRAULIC POWER UNIT**



OUTLETS TO BE SUPPLIED BY G.C **WITHIN 36"** OF THE CONTROLLER ON THE RIGHT SIDE.  
 REQUIRES:  
 \* **NEMA 5-15** OUTLET AT 60" HIGH  
 \* **NEMA 14-30** OUTLET AT 48" HIGH

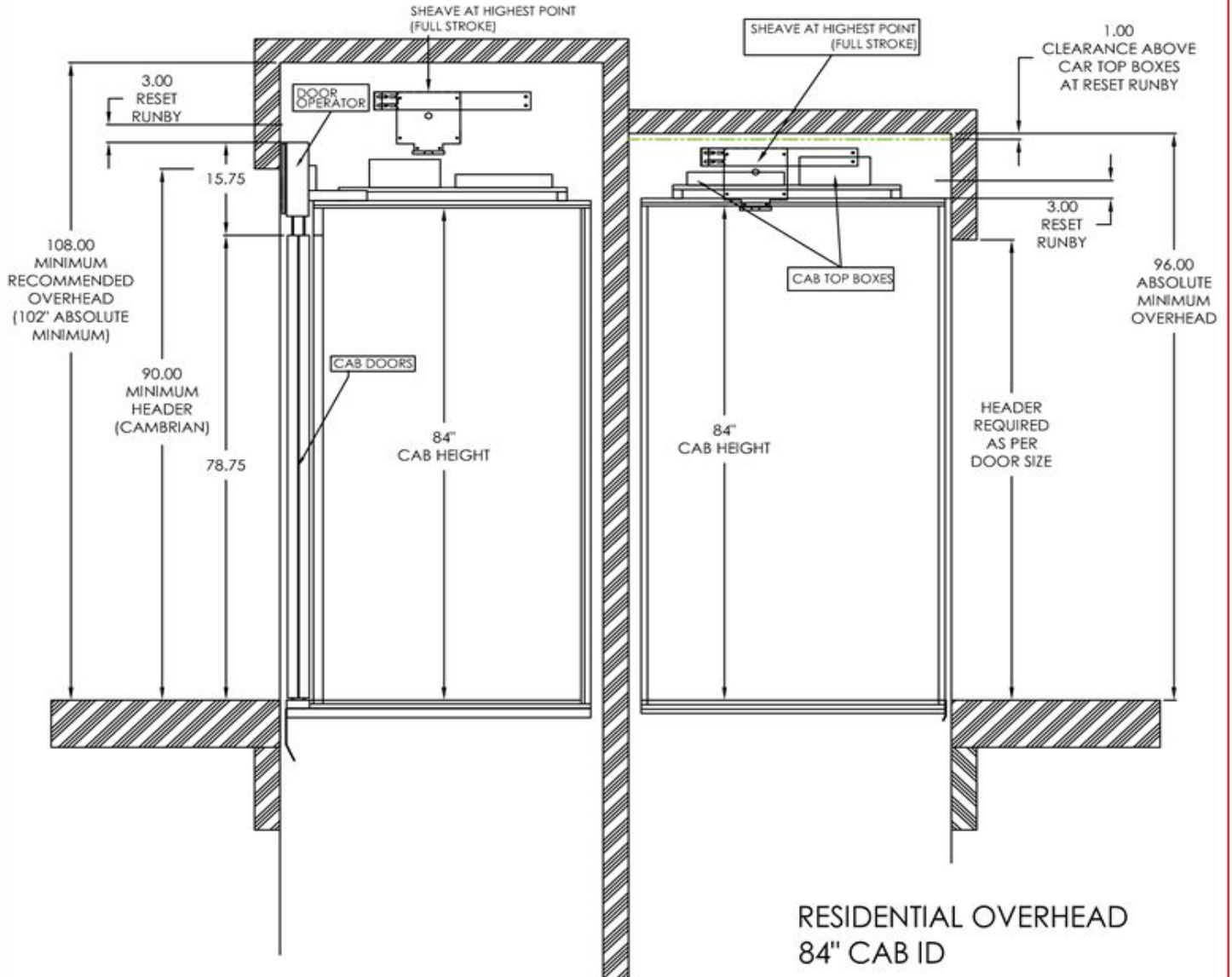
**WIRE GAUGE AS PER LOCAL CODE REQUIREMENTS**

USUALLY MOUNTED IN MECHANICAL ROOM ON WALL **WITHIN 6' OF HYDRAULIC POWER UNIT** OR TO STRUTS MOUNTED ON REAR OF PUMP TANK

**BES3 RESIDENTIAL PUMP CONTROLLER DETAILS**

HERITAGE/CAMBRIAN  
STANDARD HEIGHT DOORS  
78.75" [2000mm] HIGH

ELMIRA

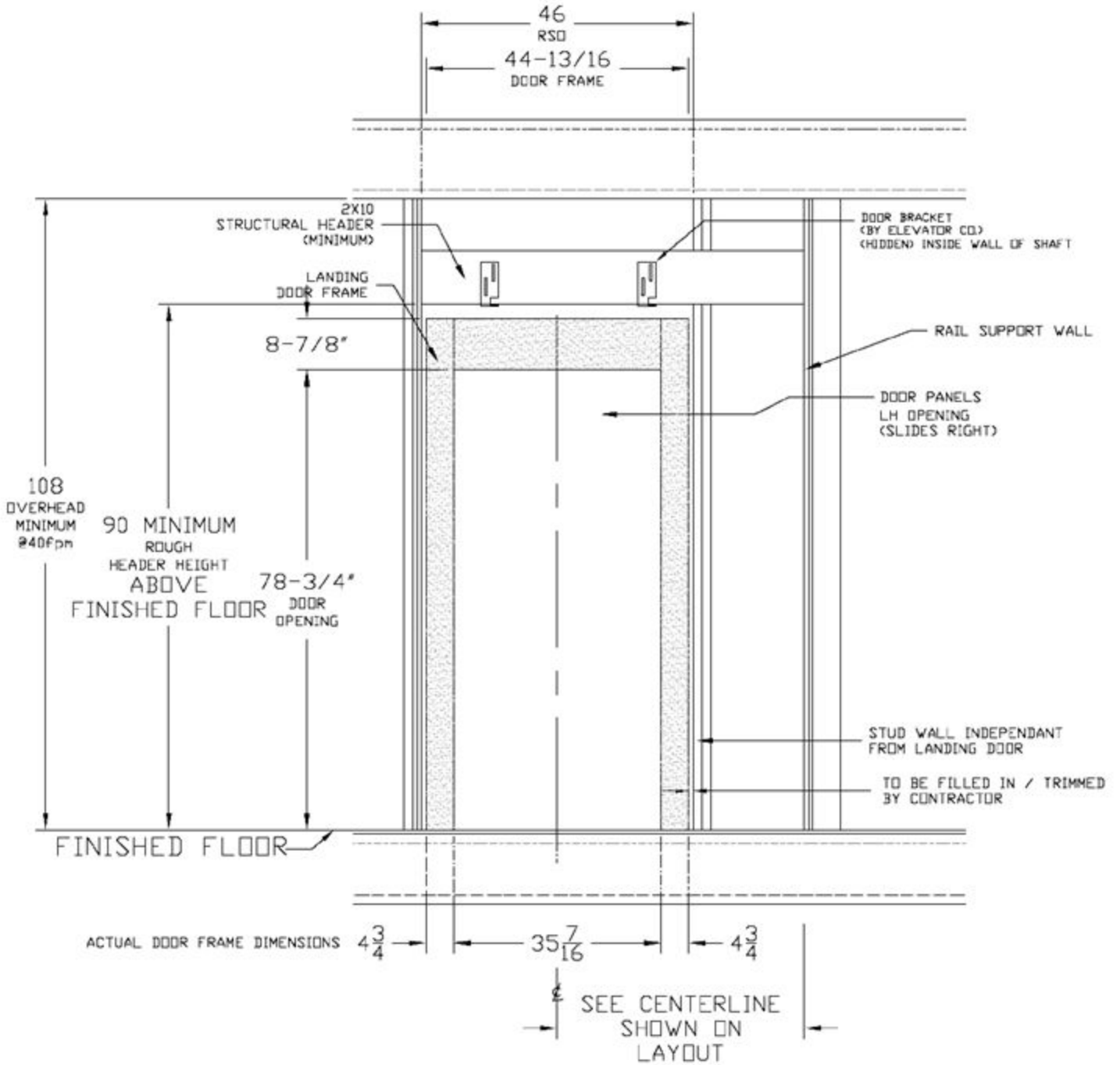


RESIDENTIAL OVERHEAD  
84" CAB ID

**CAMBRIDGE**  
ELEVATING INC.

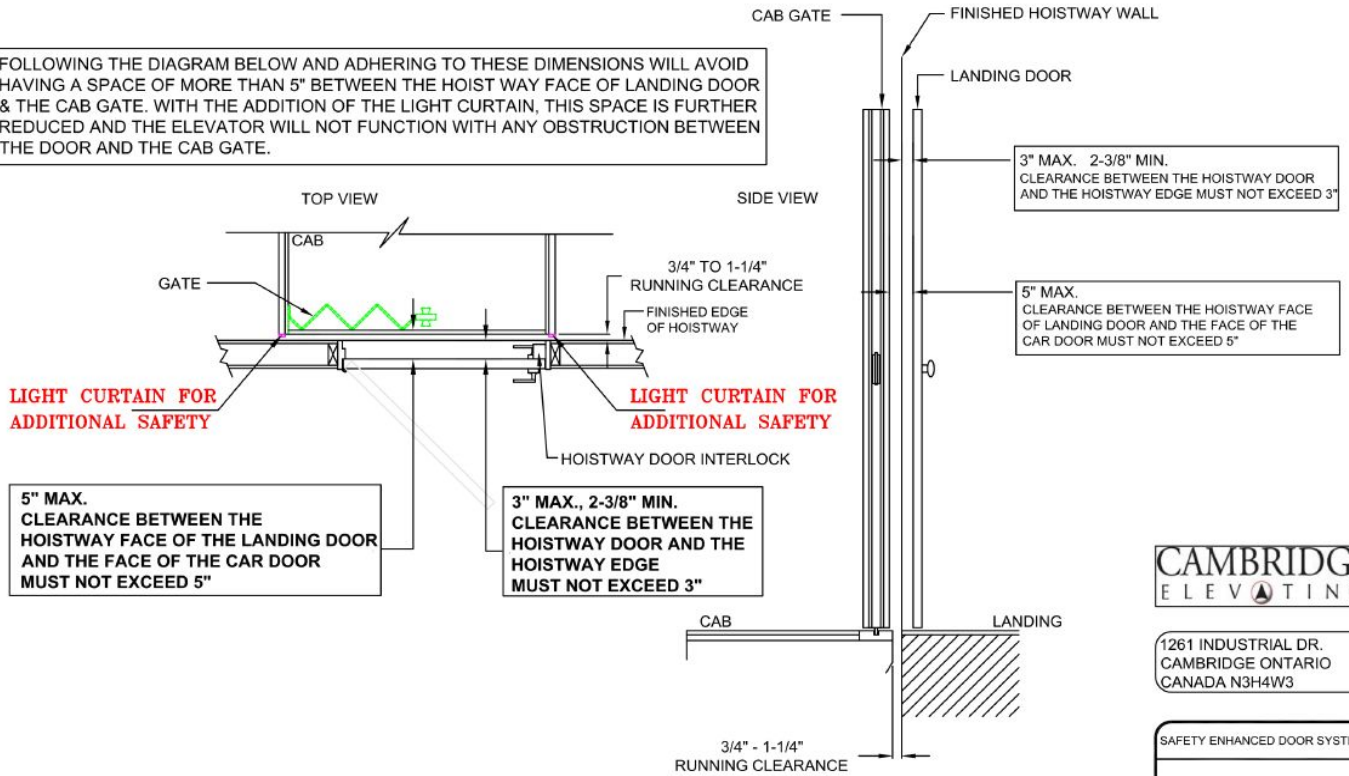
THIS DRAWING AND THE INFORMATION IT CONTAINS ARE PROPRIETARY TO CAMBRIDGE ELEVATING INC. THIS DOCUMENT MUST NOT BE DUPLICATED, OR ITS CONTENTS USED OR DISCLOSED (IN WHOLE OR IN PART) WITHOUT THE WRITTEN PERMISSION FROM CAMBRIDGE ELEVATING INC.

1261 INDUSTRIAL RD  
CAMBRIDGE, ONTARIO  
WWW.CAMBRIDGEELEVATING.COM



# CAMBRIDGE ELEVATING SAFETY ENHANCED DOOR SYSTEM

FOLLOWING THE DIAGRAM BELOW AND ADHERING TO THESE DIMENSIONS WILL AVOID HAVING A SPACE OF MORE THAN 5" BETWEEN THE HOIST WAY FACE OF LANDING DOOR & THE CAB GATE. WITH THE ADDITION OF THE LIGHT CURTAIN, THIS SPACE IS FURTHER REDUCED AND THE ELEVATOR WILL NOT FUNCTION WITH ANY OBSTRUCTION BETWEEN THE DOOR AND THE CAB GATE.



5" MAX. CLEARANCE BETWEEN THE HOISTWAY FACE OF THE LANDING DOOR AND THE FACE OF THE CAR DOOR MUST NOT EXCEED 5"

3" MAX., 2-3/8" MIN. CLEARANCE BETWEEN THE HOISTWAY DOOR AND THE HOISTWAY EDGE MUST NOT EXCEED 3"



1261 INDUSTRIAL DR.  
CAMBRIDGE ONTARIO  
CANADA N3H4W3

SAFETY ENHANCED DOOR SYSTEM

ELMIRA MODEL WITH ACCORDIAN GATE

**IMPORTANT NOTE: HOISTWAY MUST BE PLUMB WITHIN 1/8" TO ENSURE ADEQUATE GAPS / RUNNING CLEARANCE**